




## Timer RC-16

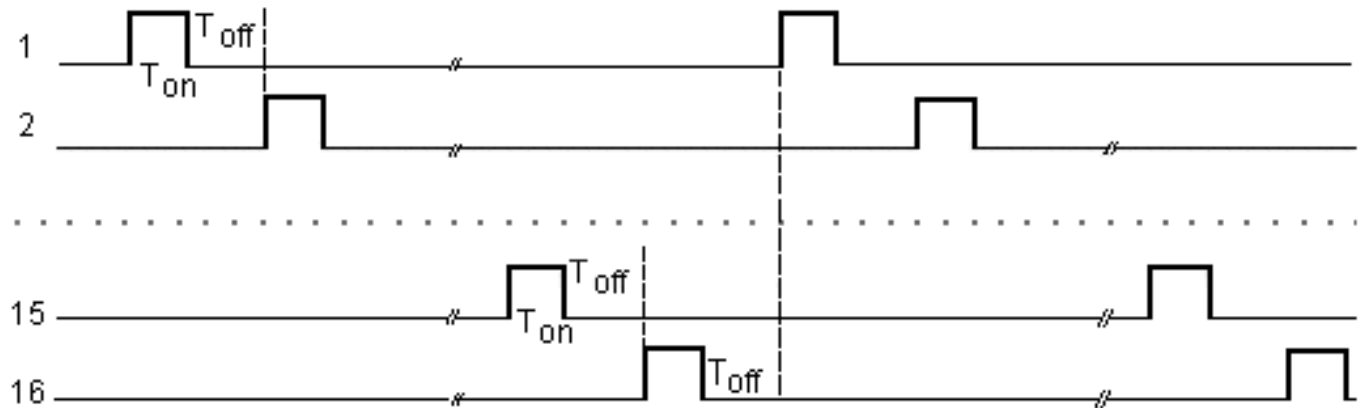
[Description](#) [Features](#) [Operation](#) [Specification](#) [Timing Diagrams](#)

<p><b>Description</b></p>		<p>RC-16 is used to operate up to 16 loads at a recycled mode.  <b>Option:</b> model RC-16-BT including internal timer (for loads activation depending on mode of external differential-pressure switch).                  The internal timer guarantees at least one cycle of RC-16 operation after external switch changes mode .</p>
<p><b>Features</b></p>	<ul style="list-style-type: none"> <li>■ Repeatability +/-1%</li> <li>■ Time delay from sec. to hours (upon request)</li> <li>■ Up to 16 outputs</li> <li>■ Solid-state outputs</li> <li>■ LED indicate the active output</li> <li>■ AC or DC supply voltage</li> <li>■ 3 years warranty</li> <li>■ competitive price</li> </ul>	
<p><b>Operation</b> (Timing diagrams see below)</p>	<ul style="list-style-type: none"> <li>■ The <b>first</b> load is activated at connecting power, remains on for <math>T_{on}</math> sec.</li> <li>■ After delay <math>T_{off}</math>, the <b>second</b> load is activated for <math>T_{on}</math> sec.</li> <li>■ After activation of the <b>last</b> load for <math>T_{on}</math> sec. and pause <math>T_{off}</math>, the first load will start again.</li> </ul> <p>* Periods <math>T_{on}</math> and <math>T_{off}</math> are upon customer request.                  * Number of active outputs (return to the first load) can be set by jumpers on the circuit board of RC-16.</p> <hr/> <p>RC-16-BT with internal timer (T).                  Loads will operate <math>T_{on}</math> , and will stop for <math>T_{off}</math> same as above. An external switch (DP switch) operates the internal timer and time T will ensure, at least one complete cycle.</p> <ul style="list-style-type: none"> <li>○ RC-16 is stopped after the end of T delay.</li> <li>○ <math>T \text{ delay} = n \times (T_{on} + T_{off})</math>,                      n -number RC-16 outputs (up to 16) in this application</li> </ul> <p>Option: potentiometer for T delay adjusting.</p>	

# Timing Diagrams for RC16

## 1. Recycled mode

Channels



## 2. Option – Internal Timer

External switch

Close

Open

Internal timer

Channels

1

2

6

7

...

...

...

...

...

...

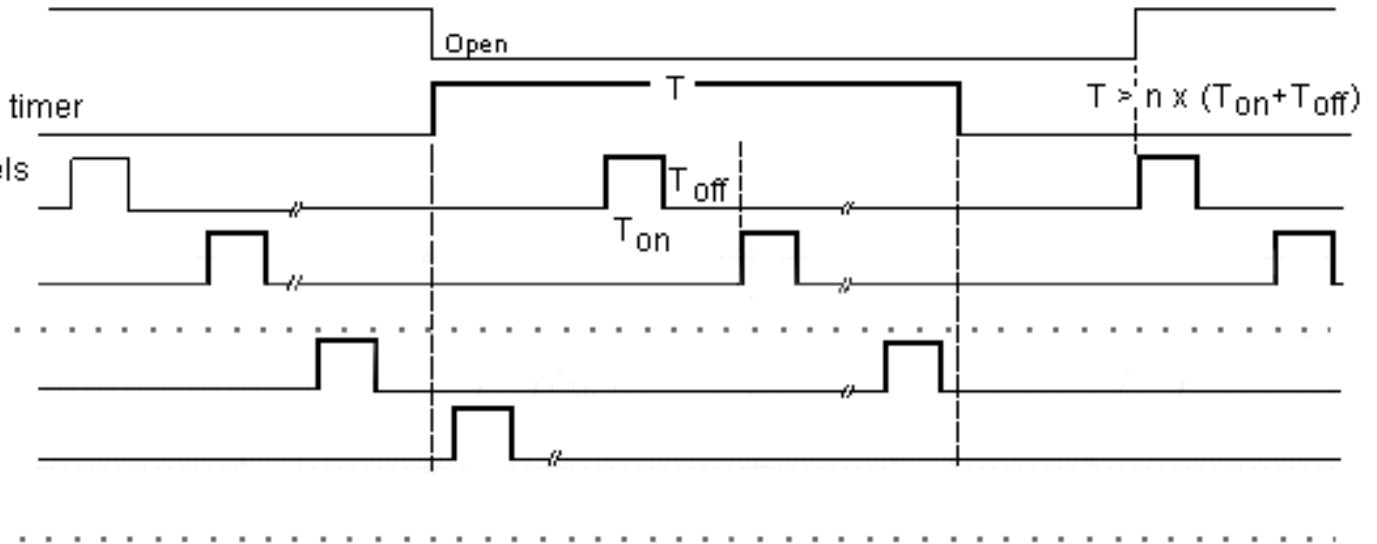
...

...

...

...

...



## Specification

PARAMETER	RC-16
Time delay	Sec. up to hours
Display	16 red LED-s indicate active output
Output	* 16 "electronically contacts", 1 A. * Number of active output is selected by internal jumpers .
Power supply	24 VDC or 110 /220 VAC
Repeatability	+/- 1% under fixed condition
Ambient Temp.	-10oC ... +55oC.
Connection	Plug-in terminals on the circuit board. Cable connection to terminals are made via glands which can be mounted on a side of a case.
Size	W 168 x H 106 x L 220
Enclosure	Plastic case with transparent cover
Protection	IP-40